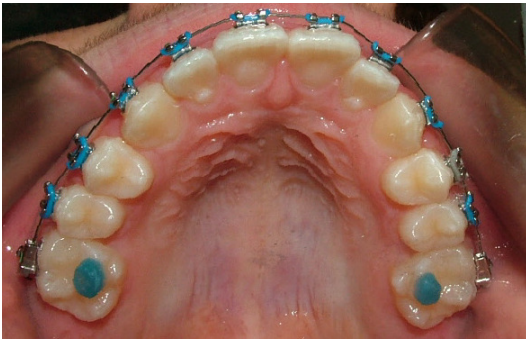


## BITE PADS

---

**WHAT?** Blue coloured tooth cement/resin called [Band-Lok®](#)



**WHEN?** It is used to protect the bite usually when the braces are initially placed

**WHY?** This bonding allows a secure biting surface in the back teeth for chewing while protecting the front teeth from hitting on the braces

**HOW LONG?** The bite changes as the teeth align and the bite pads will be removed once they are no longer required

**EATING?** At first, chose soft foods and cut into small pieces. Once the bite adjusts it becomes more comfortable to eat most foods